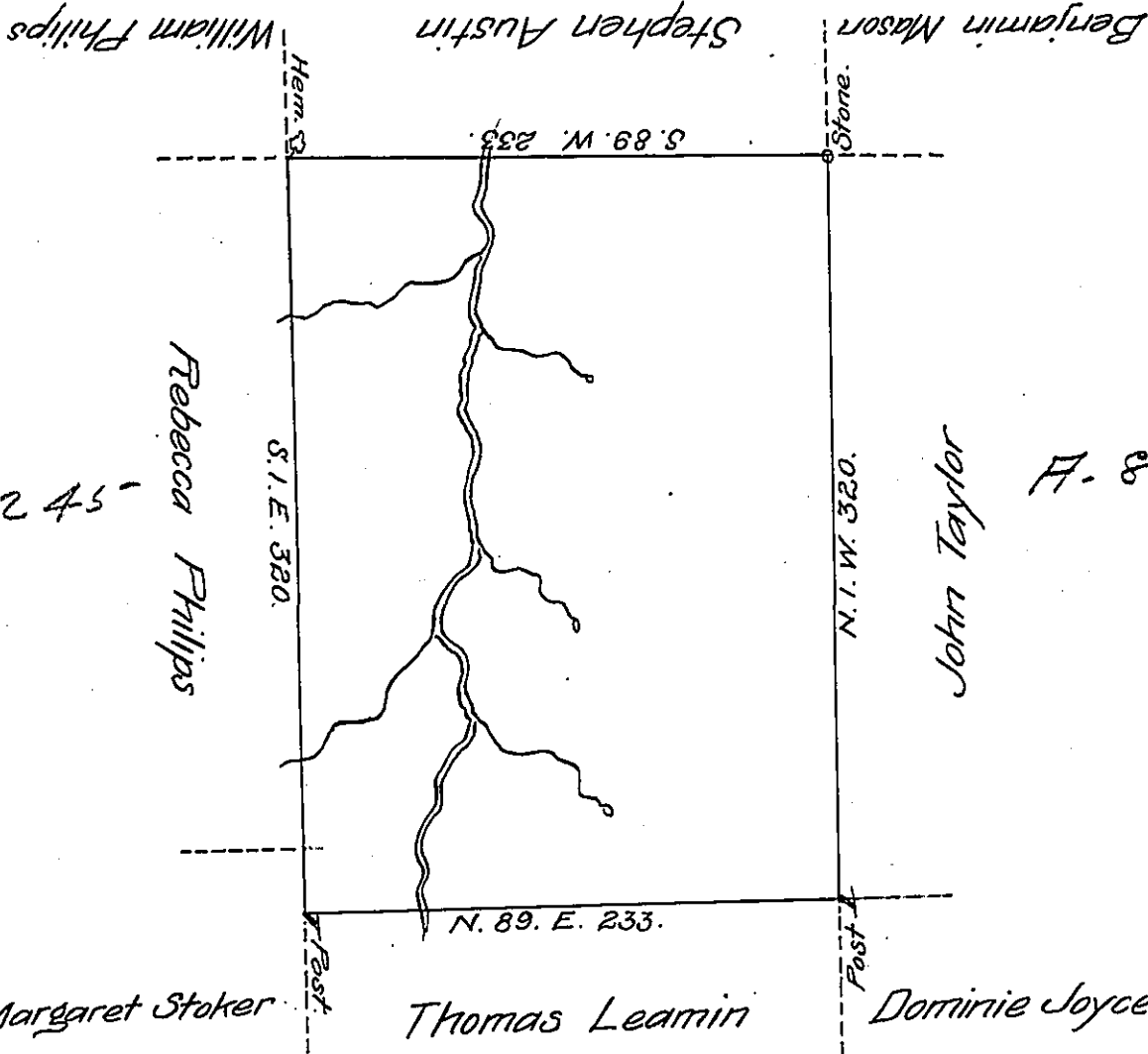


Palmyra -  
RIE

A. 83-198-



C. 173. 245-

A. 84. 247.

C. 115. 87

By Virtue of a Warrant dated the 12<sup>th</sup> February 1793  
 Surveyed the 20<sup>th</sup> June 1793 to Isaac Wickoff the above described  
 tract of land situate on a branch of Wallingpaupack creek in the  
 County of Northampton Containing four hundred and thirty-nine  
 Acres one hundred perches and the Allowance of Six  $\frac{1}{2}$  Cent. &<sup>a</sup>  
 $\frac{1}{2}$  Geo. Palmer D.S.

To Daniel Brodhead Esquire  
 Surveyor General.

IN TESTIMONY that the above is a copy of the original remaining on file in  
 the Department of Internal Affairs of Pennsylvania, made  
 conformably to an Act of Assembly approved the 16th day of  
 February, 1833, I have hereunto set my Hand and caused  
 the Seal of said Department to be affixed at Harrisburg,  
 this first day of April 1907.

*Isaac B. Brown*  
 Secretary of Internal Affairs.